
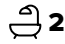

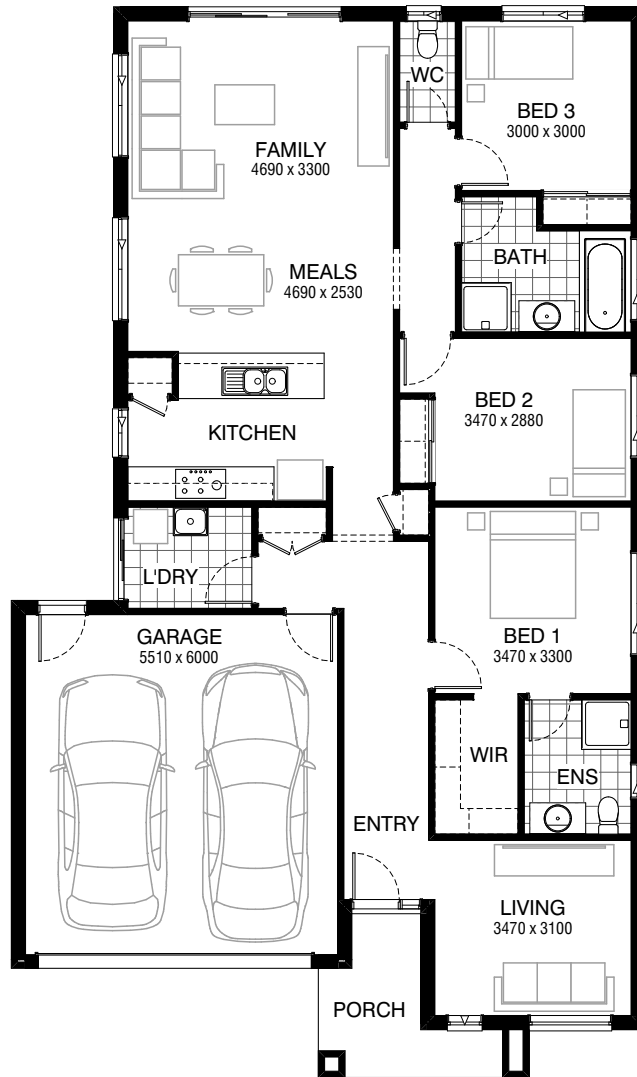


Total squares **19.3sq**

 **3**  **2**  **2**



Facades available:

Drysdale, Arkley, Coburn, Collins
Dowd, Haring, Nolan, Alpine
Woodland, Felix

Overall home width 11.15m
Overall home length 18.83m

Residence	136.4m ²	14.7sq
Garage	36.5m ²	3.9sq
Porch	6.2m ²	0.7sq
Total	179.1m²	19.3sq

FLOORPLAN OPTIONS

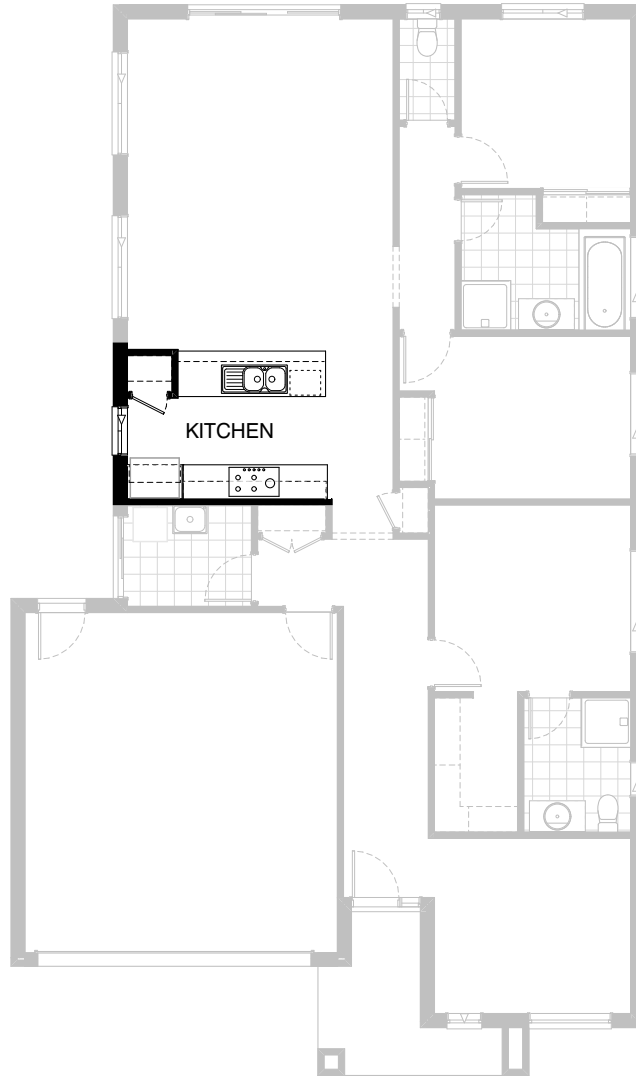
All available ready-to-go floorplan options for this design can be viewed on the following pages, or visit www.burbank.com.au.

Listed details based on Drysdale façade floorplan (illustrated)

*Copyright conditions. All photos and illustrations are representative only. Floor plans and specifications may be varied by Burbank without notice, the dimensions are diagrammatic only and a Building Contract with final drawings will display correct dimensions and detail. All designs are the property of Burbank and must not be used, reproduced, copied or varied, wholly or in part without written permission from an authorised Burbank representative. Copyright Burbank Australia Pty Ltd. ABN 91 007 099 872. Builders Registration Number CDB-U-52603.

Call 13 BURBANK
Visit burbank.com.au

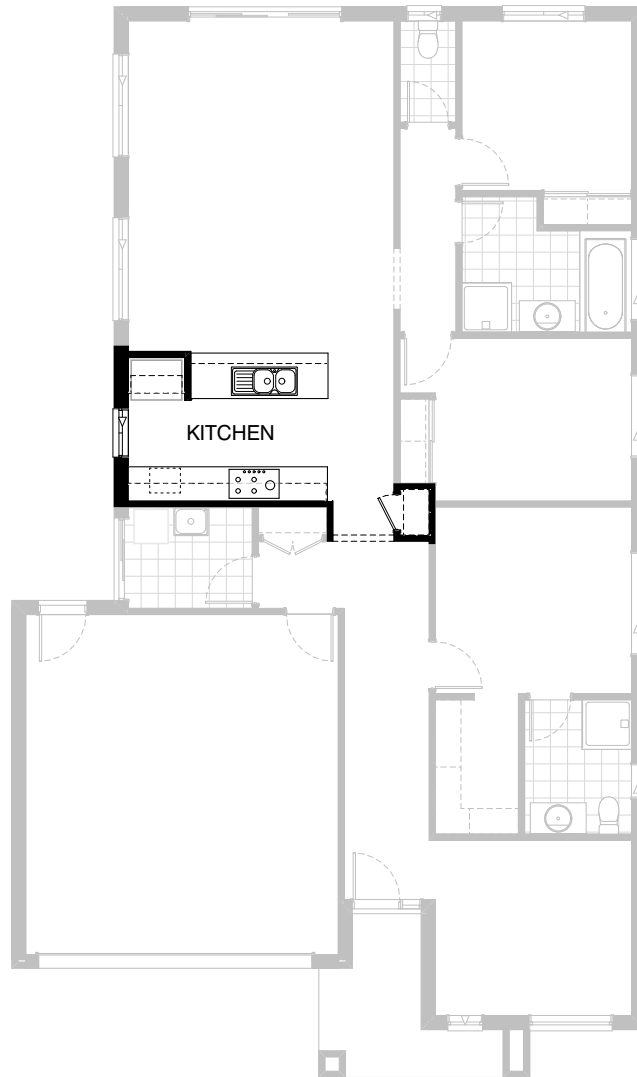
FLOORPLAN OPTIONS



Option K-1

Provide Kitchen Upgrade with 3no. 800mm base cabinets, 1no. 900mm underbench oven with 900mm gas cooktop & retractable rangehood above, 2no. 800mm overhead cabinets, 1no. laminated open shelf above refrigerator space, plaster lined Pantry with 1no. 620mm flush panel hinged door and 450mm shelves, 1no. 450mm drawer unit, 1no. laminated DW. provision, 1no. laminated MW. provision with pot drawer below and additional bench top and tiled splashback to suit.

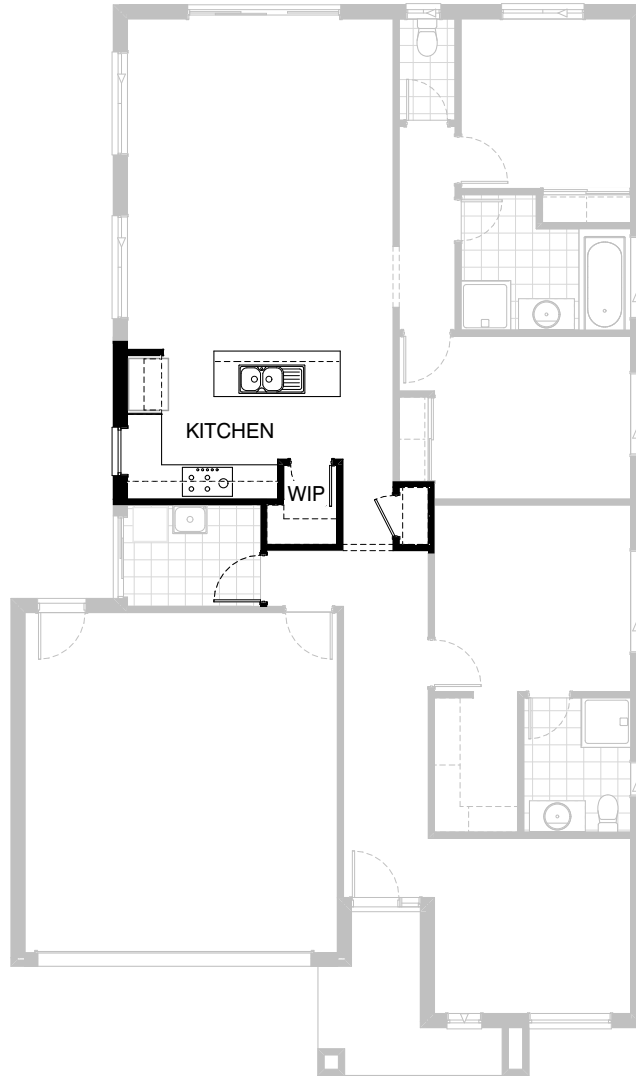
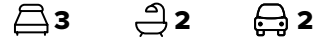
FLOORPLAN OPTIONS



Option K-2

Provide Kitchen Upgrade by deleting Broom cupboard and relocating Pantry.
Provide 1no. 300mm and 1no. 350mm base cupboards, 2no. 800mm and
1no. 900mm base cabinets, 1no. 450mm drawer unit,
1no. 600mm and 2no. 800 overhead cabinets,
1no. 300mm laminated overhead open shelves,
1no. laminated MW. provision with pot drawer below, 1no. laminated DW.
provision, 1no. 900mm underbench oven with 900mm gas cooktop &
retractable rangehood above,
1no. laminated open shelf above refrigerator space,
additional bench top and tiled splashback to suit.

FLOORPLAN OPTIONS



Option K-3

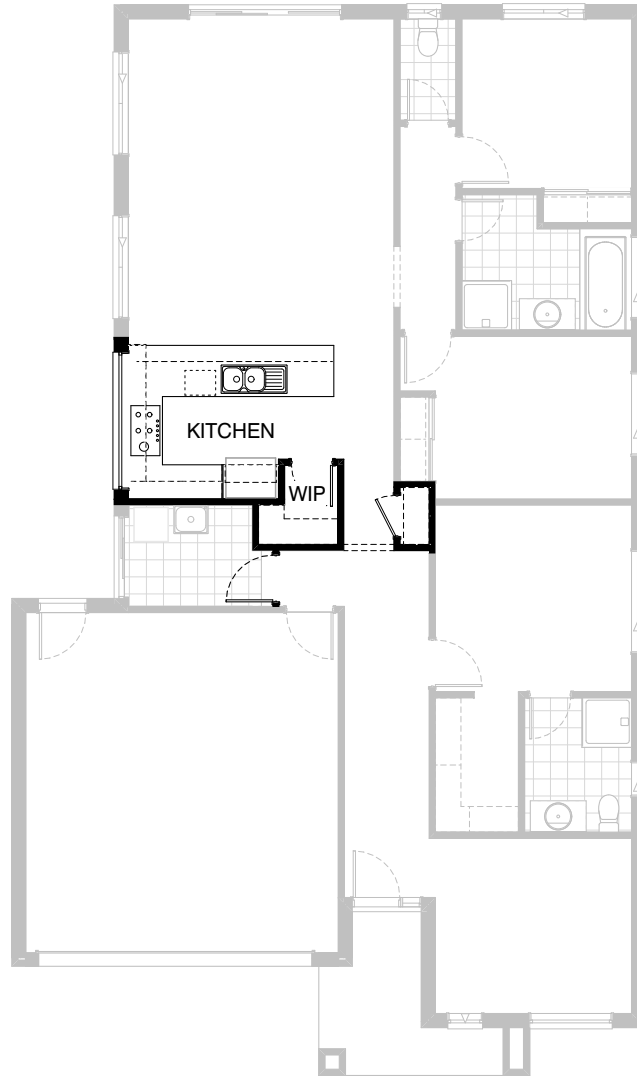
Provide Kitchen and W.I.P Option by increasing Laundry width by 160mm, delete Linen cupboard, reduce Laundry passage by 200mm and provide site build plaster lined WIP.

4no. 300mm and 4no. 450mm deep shelves and 1no. 720mm flush panel hinged door. Decrease Kitchen opening / bulkhead width by 190mm to 900mm in lieu of standard 1090mm.

Provide 1no. 300mm and 2no. 400mm and 2no. 800mm base cabinets, 1no. 450mm drawer unit, 1no. 1050mm blind carcass with 1no. 600mm door, 1no. 700mm and 1no. 900mm overhead cabinets, 1no. laminated DW. provision, 1no. laminated open shelf above refrigerator space, 1no. 900mm underbench oven with 900mm gas cooktop & retractable rangehood above and 1no. 1200mm x 850mm aluminium fixed window and additional tiled splashback and bench top to suit.

Convert Broom cupboard into Linen cupboard, increase width by 200mm in line with W.I.P wall, provide 720mm hinged door i.l.o. 620mm door

FLOORPLAN OPTIONS



Option K-4

Provide Kitchen Upgrade including relocation of Linen to passage to create W.I.P, 900mm deep Kitchen island bench.

1no. 900mm underbench oven with 900mm gas cooktop & retractable rangehood above.

Provide 2no. 150mm and 1no. 700mm and 1no. 900mm base cabinets, 1no. 450mm drawer unit, 2no. 800mm corner base cabinets.

1no. 350mm and 1no. 400mm and 2no. 700mm and 1no. 900mm overhead cabinets, 1no. 900mm corner overhead cabinet.

1no. laminated DW. provision, 1no. MW. provision with pot drawer below, 1no. laminated open shelf above refrigerator space including 16mm laminated end panel and additional bench top and tiled splashback to suit.

Provide 1no. 514mm x 2410mm fixed aluminium to Kitchen splashback.

FLOORPLAN OPTIONS



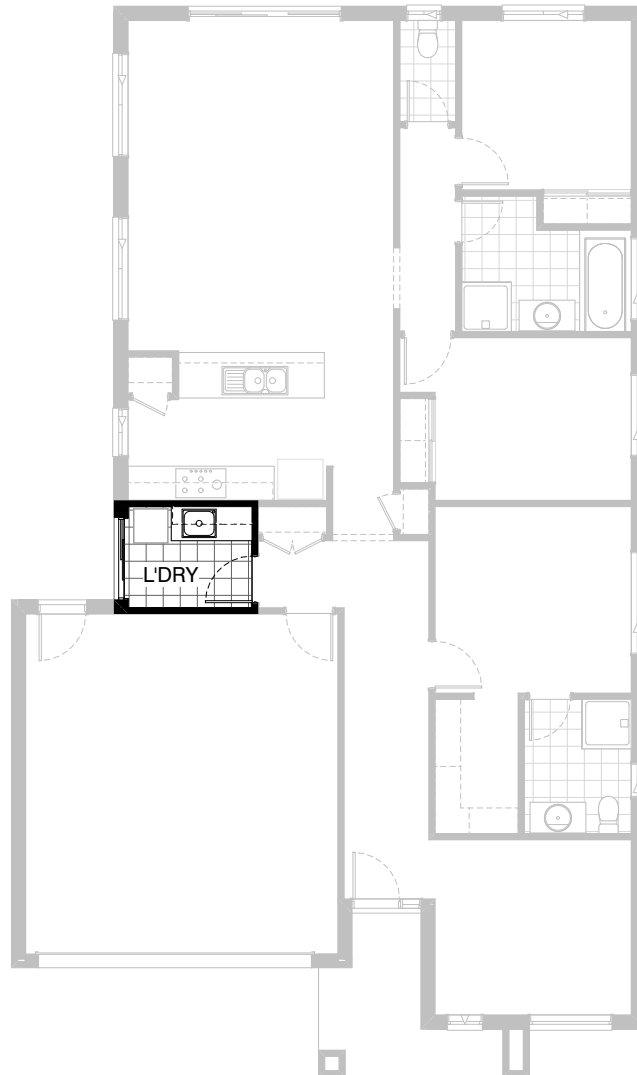
3



2



2



Option LD-1

Provide Laundry Upgrade with s.s. inset trough
in 32mm laminated bench top.
1no. 450mm and 1no. 900mm base cabinets,
1no. 450mm and 1no. 900mm overhead cabinets
and additional tiled splashback and bench top to suit.

FLOORPLAN OPTIONS



3



2



2



Option ENS-1

Provide Ensuite Option with 1no. 1200mm x 900mm polymarble shower base in lieu of standard.

1no. 1582mm wide vanity unit with 2no. basins in lieu of standard. Increase Ensuite width by 300mm and decrease W.I.R width by 100mm and decrease Entry width by 200mm. Provide 720mm cavity sliding door off W.I.R in lieu of 720mm hinged door.

FLOORPLAN OPTIONS



Option EP1-1

Provide Alfresco under dwelling roof line to rear of Family room including structural concrete floor, light point and 2no. 470mm x 470mm brick piers.
Increases area by 14.35m².
Increases length by 3240mm.

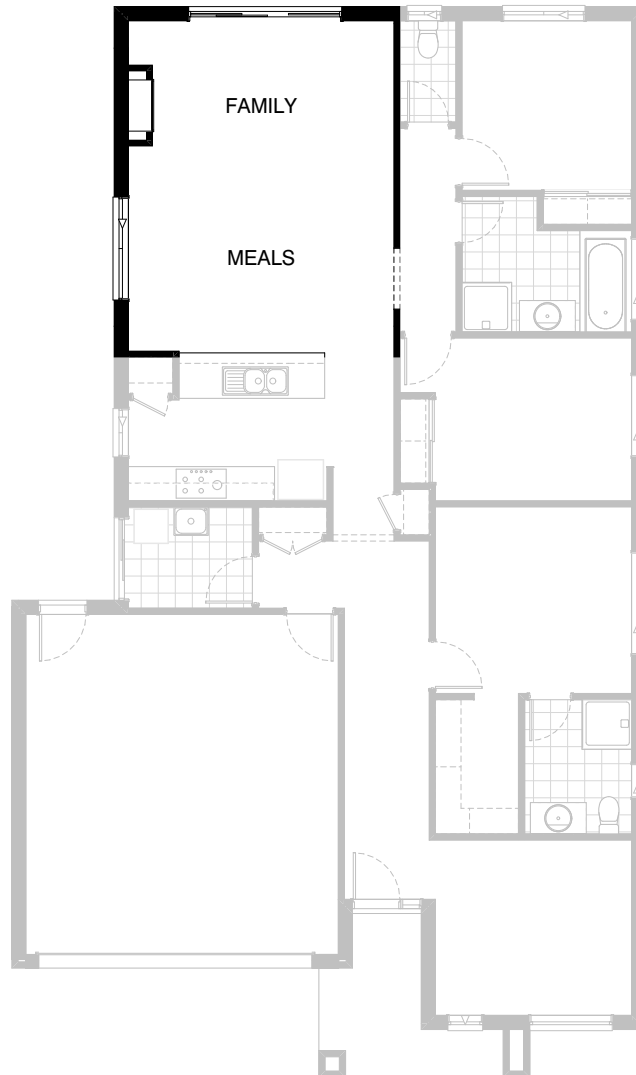
FLOORPLAN OPTIONS



Option IP1-1

Relocate Living with Bed 1, Ensuite and W.I.R

FLOORPLAN OPTIONS



Option IP1-2

Provide Real Flame Inspire 900 fireplace,
400mm off floor level in a 1400mm x 420mm
boxed out plaster wall with a 4 sided black
fascia to Family room side wall.
Delete 1no. 514mm x 1800 aluminium sliding window
to Family and relocate Meals window by 360mm.

FLOORPLAN OPTIONS



Option IP1-3

Provide Bedroom 4 Option in lieu of Living room and relocate Bedroom 1 to suit. Decrease Ensuite length by 20mm, increase Bed 2 length by 120mm, increase Bed 2 robe width by 410mm and provide painted gyprock sliding doors in lieu of standard 2no. 620mm hinged doors. Provide additional site built plaster lined robe with hanging rail and painted gyprock sliding doors and 1no. 820mm flush panel hinged door to Bed 4 and delete 1no. 1800mm x 1810mm aluminium sliding window and provide 1no. 1200mm x 1450mm aluminium sliding window to Bed 4 to suit and increase bulkhead width to 210mm in lieu of 90mm.

FLOORPLAN OPTIONS



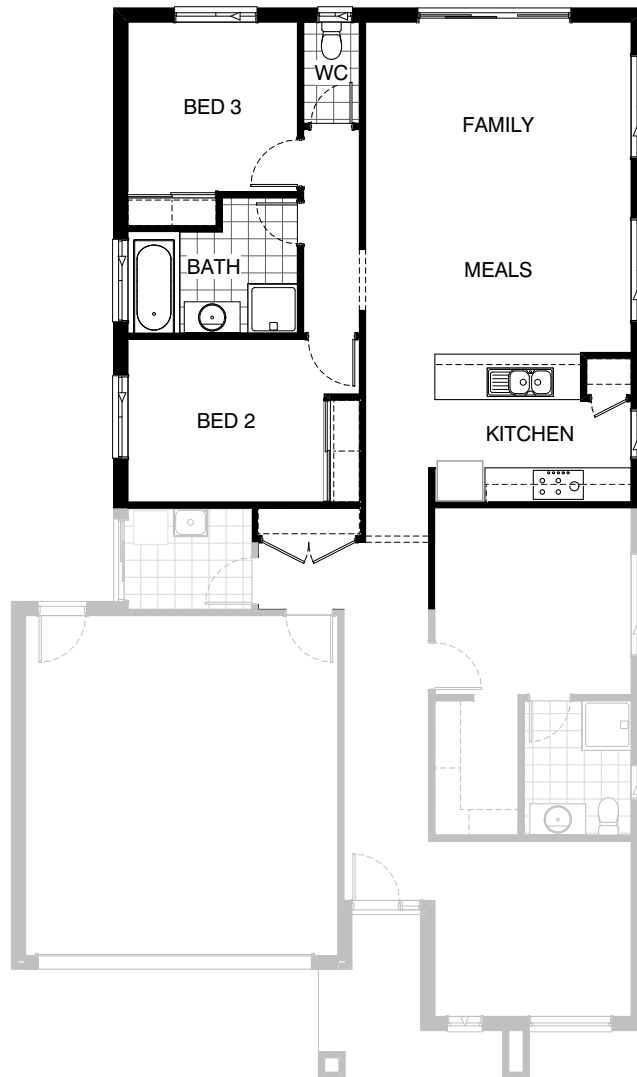
3



2






2

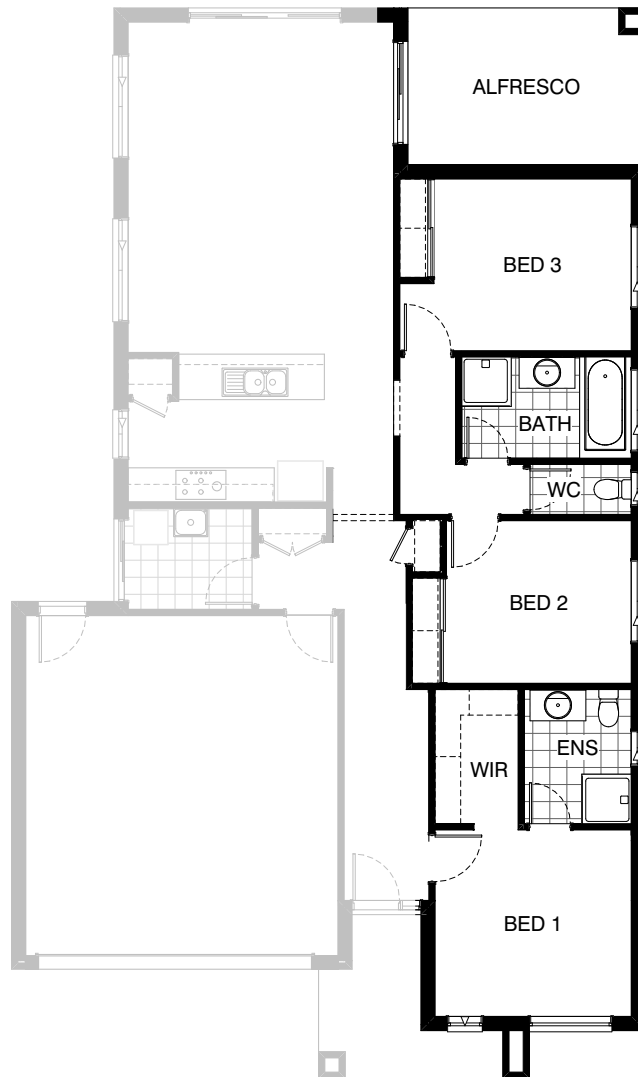


Option IP1-4

Mirror rear section of Home including deletion of Broom cupboard and increase length of Bed 2 robe and increase length of Linen cupboard with 2no. 820mm hinged doors in lieu of 2no. 520mm doors.

FLOORPLAN OPTIONS

 **3**  **2**  **2**

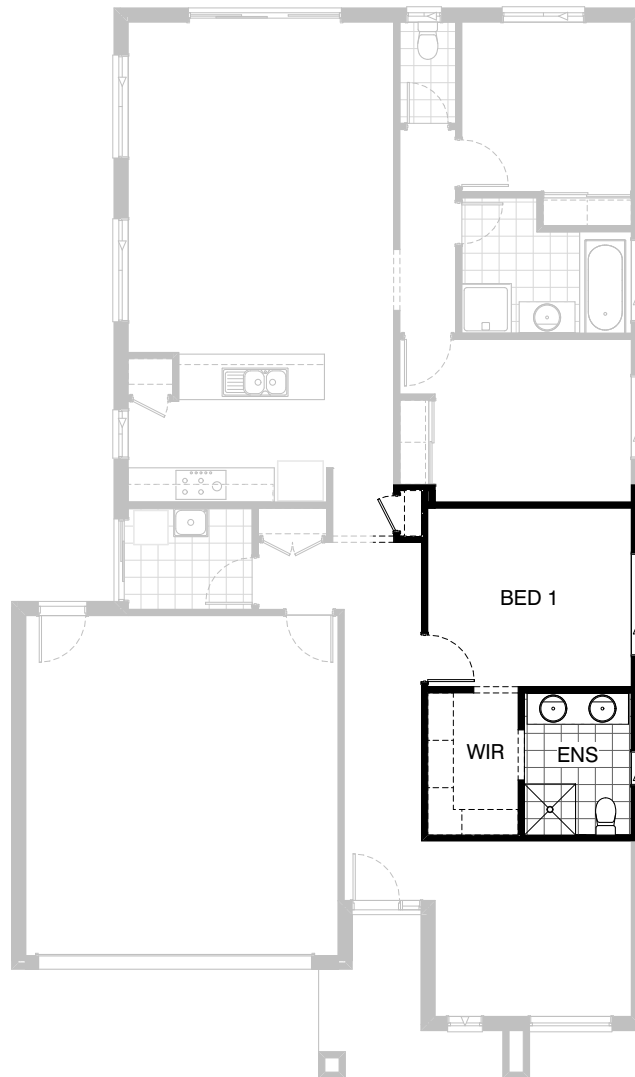


Option IP1-5

Provide Alfresco Option in lieu of Living including relocate Bed 1 to Living location. Relocate bed 2 to Bed 1 location including additional robe space with gyprock sliding doors. Relocate WC, Bath and Bed 3 to provide 2760mm by 4180mm (11.54m²) Alfresco to rear under existing roof line with structural concrete floor and 1No. 470mm x 470mm brick pier. Delete 1800mm x 1810mm aluminium sliding window to Bed 1 and provide 2110mm x 1810mm aluminium sliding door to Family / Alfresco.

NOTE: Not available with Floor Plan Options IP1-1, IP1-3, and IP4-1.

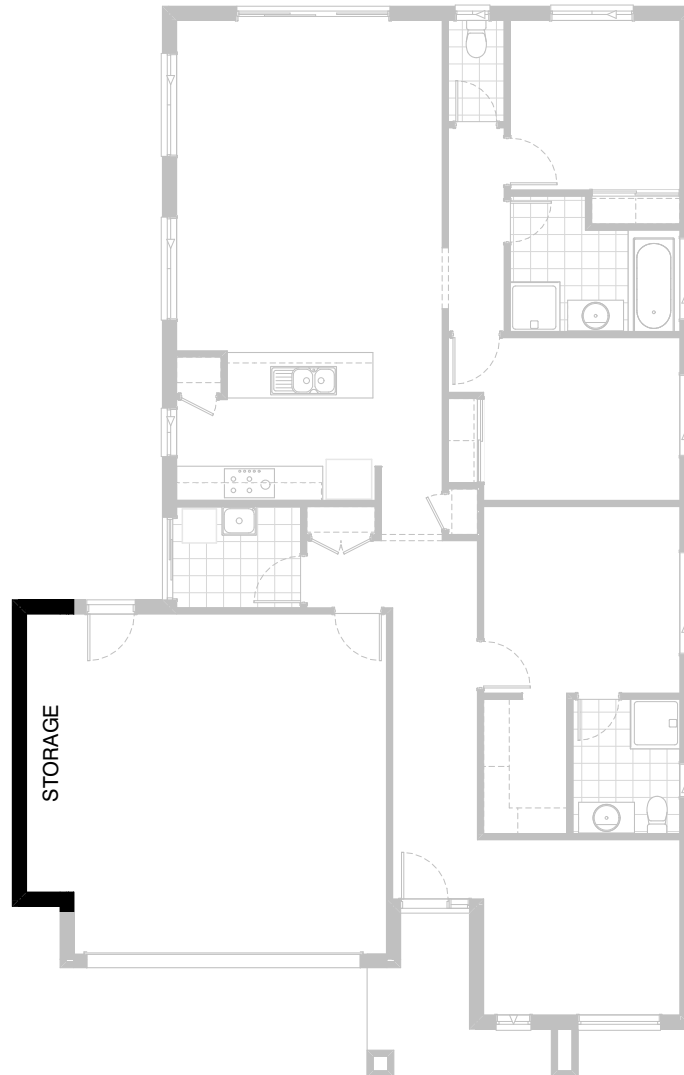
FLOORPLAN OPTIONS



Option IP1-6

Provide alternative Ensuite Option by reducing Bed 1 by 140mm towards rear of home and extend Ensuite and W.I.R. Extend Bed 1 and W.I.R. by 130mm into Passage including reduced Broom and provide 300mm deep shelves in lieu of 450mm.
Remove 720mm door to Ensuite and provide 900mm opening via W.I.R. Relocate 900mm shower base and provide tiled shower base in lieu of standard.
Move Ensuite window 240mm towards rear of home and provide 1782mm vanity unit with double basin in lieu of standard.

FLOORPLAN OPTIONS



Option G-1

Provide extension to Garage to
create additional Storage area.
Increases area by 4.53m².
Increases width by 840mm.

FLOORPLAN OPTIONS



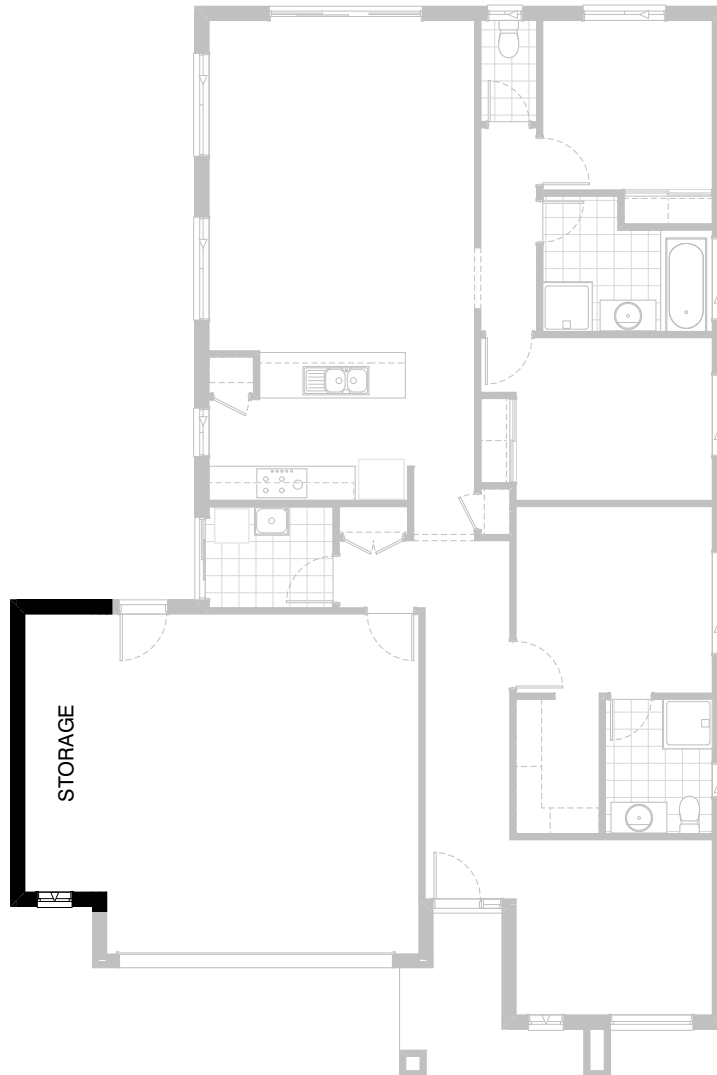
3



2



2



Option G-2

Provide extension to Garage to create
Storage area including additional
2057mm x 610mm aluminium awning window.
Increases area by 7.76m².
Increases width by 1440mm.

FLOORPLAN OPTIONS



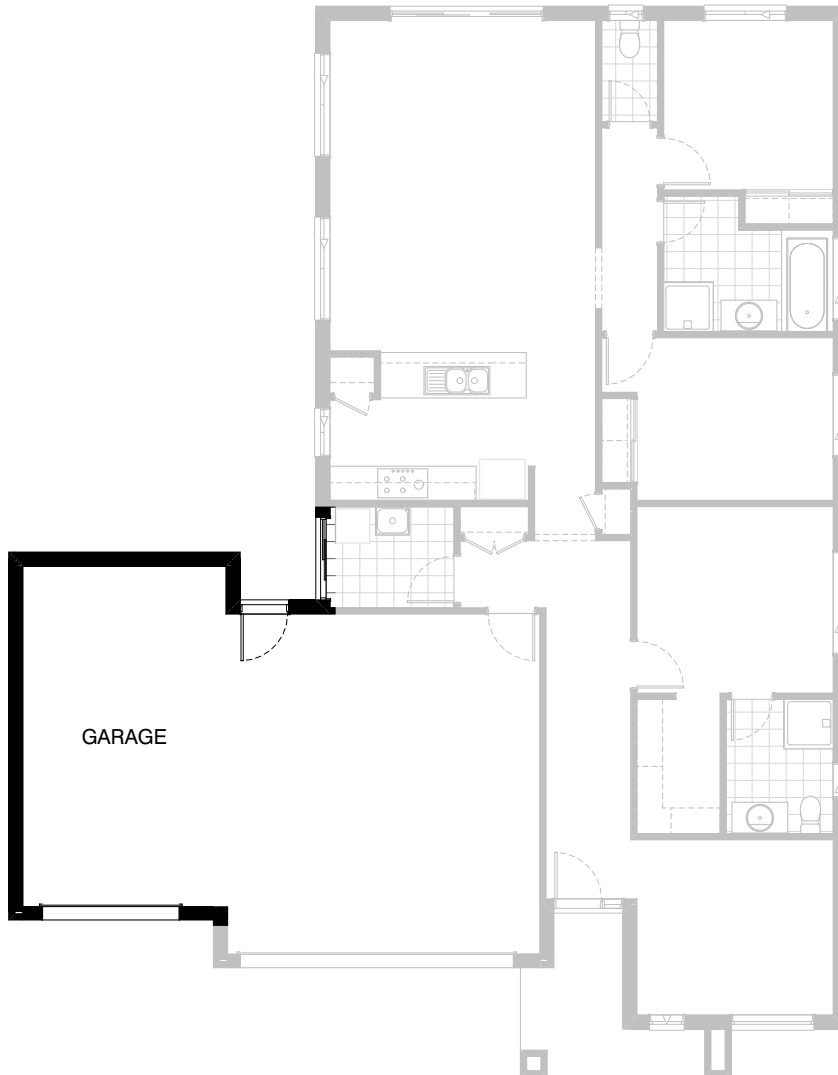
3



2



2



Option G-3

Provide triple car Garage including additional Garage door as per colour selection.
Increases area by 23.69m².
Increases width by 3600mm.